



Weekly Indian River Lagoon Harmful Algal Bloom Observations

Project Summary

Report Date	Project Name	Prepared By
May 16th to 22nd, 2022	Florida Department of Environmental Protection Grant INVO14: Remote Sensing of Harmful Algal Blooms in the Indian River Lagoon and Connected Waterways in Brevard County	Andrew Kameronosky, Iulia Bibire

Status Summary

Available Sentinel 2 and 3 Imagery

The availability and usability of satellite imagery is contingent upon both the satellite being overhead and low cloud cover. The orbits of the Sentinel satellites will on occasion cover a portion of the Indian River Lagoon. Likewise cloud cover can also result in only portions of the Indian River Lagoon (IRL) being visible.

Table 1 below lists the availability of Sentinel imagery and its usability for Harmful Algal Bloom (HAB) analysis.

Table 1. Sentinel-2 and 3 imagery availability for May 16th – 22nd 2022

N - Imagery Not available

Y - C – Imagery Available, Cannot Use Due To Cloud Cover

Y - P – Imagery Available, Only Partial Imagery of IRL

Y - G – Imagery Available, No Issues Over The IRL

Date	S2 - A	S2 - B	S3 - A	S3 - B
16-May-22	N	N	N	Y - G
17-May-22	N	N	Y - G	N
18-May-22	N	Y - C	Y - G	N
19-May-22	N	N	N	Y - C
20-May-22	Y - C	N	N	Y - C
21-May-22	N	N	Y - C	N
22-May-22	N	N	Y - C	N

Summary of Harmful Algal Bloom (HAB) Activity

There was no HAB activity detected across the lagoon for the week of May 16th to 22nd, 2022. The St. John River Water Management District (SJRWMD) Continuous Monitoring (CM) stations showed no values above 6.6 Relative Fluorescence Units (RFU) (**Figure 1, Table 2**).

Current and historical data are added to the SJRWMD’s database continuously; subsequent visits may reflect such additions or revisions. SJRWMD provides no warranty as to the accuracy, reliability, or completeness of these data.

Figure 1 – St. John River Water Management District (SJRWMD) Indian River Lagoon (IRL) Continuous Monitoring Station Relative Chlorophyll A (ChlA) readings from May 16th to 22nd, 2022.

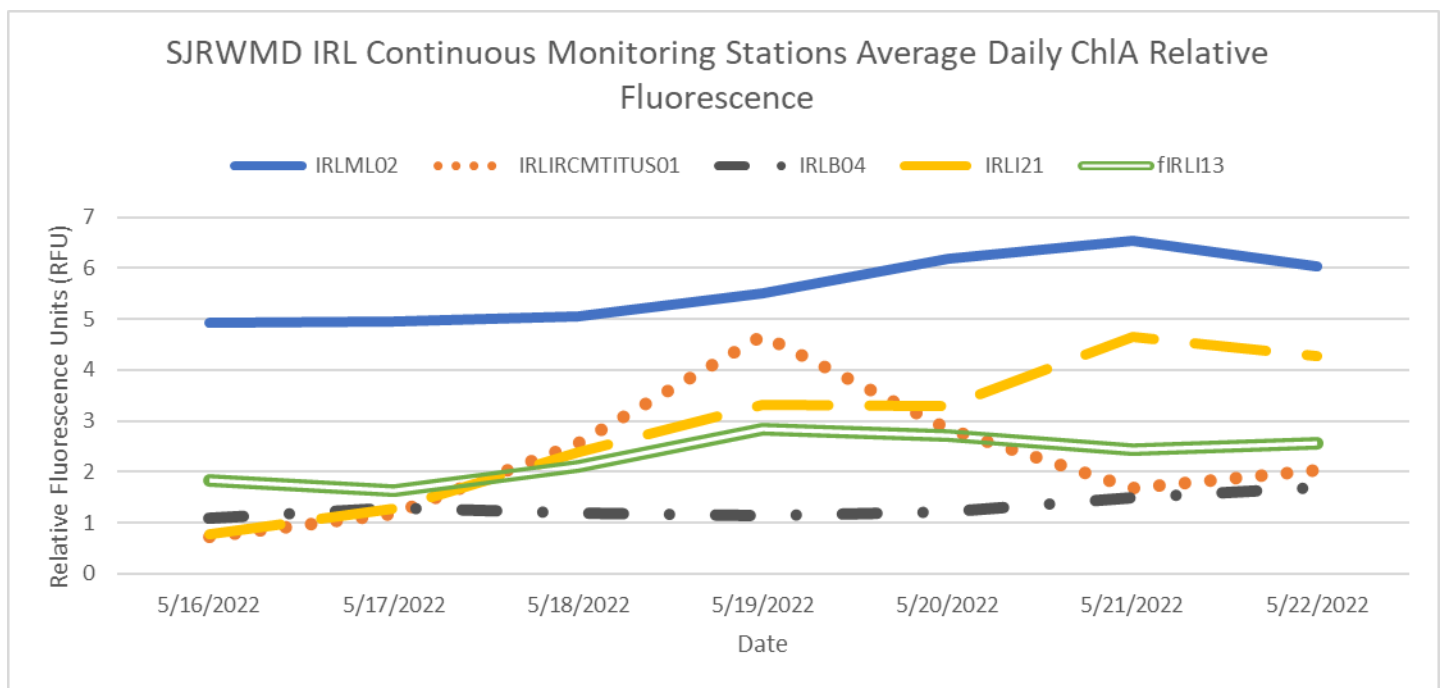


Table 2 - St. John River Water Management District (SJRWMD) Indian River Lagoon (IRL) Continuous Monitoring Station Chlorophyll A (ChIA) Relative Fluorescence averages from May 16th to 22nd, 2022.

Date	IRLML02	IRLIRCMTITUS01	IRLB04	IRLI21	IRLI13
16-May	4.9	0.7	1.1	0.8	1.8
17-May	5.0	1.2	1.3	1.3	1.6
18-May	5.1	2.6	1.2	2.4	2.1
19-May	5.5	4.7	1.1	3.3	2.8
20-May	6.2	2.8	1.2	3.3	2.7
21-May	6.5	1.7	1.5	4.6	2.4
22-May	6.0	2.0	1.7	4.3	2.6

HAB's observed by this project are defined as over 80 Micrograms/Liter ($\mu\text{g/L}$) Chlorophyll A (ChIA) (as estimated by a calibrated Normalized Difference Chlorophyll Index (NDCI)) and persistent across the week in review. The algorithms that transform the NDCI index value to estimated ChIA concentrations were developed using a second order polynomial equation. The Sentinel 2 equation has a Root Square (R^2) of 0.81 with a Root Mean Square Error (RMSE) of 14.14 $\mu\text{g/L}$ of ChIA. The Sentinel 3 equation has an R^2 of 0.92 and a RMSE of 9.92 $\mu\text{g/L}$ ChIA. The RMSE is a measure of the accuracy of a model in estimating values, ChIA in this instance, where a lower value is indicative of higher accuracy. It does not identify if the model consistently over or underestimates the modeled values. The equations are below:

- S2 Estimated ChIA = $297.36(\text{NDCI})^2 + 313.98(\text{NDCI}) + 36.152$
- S3 Estimated ChIA = $437.07(\text{NDCI})^2 + 348.98(\text{NDCI}) + 33.928$

Due to the high cloud coverage over the IRL during the past week, only 3 Sentinel scenes were usable for the detection of HAB activity. Of these, the Sentinel 3B imagery from May 16th and Sentinel 3A imagery from May 18th were selected for further analysis. The highest mean estimated ChlA concentration was observed at the Titusville station on both May 16th using Sentinel 3B imagery and May 18th using Sentinel 3A imagery, with values of 24.5 µg/L and 18.6 µg/L respectively (**Table 3**, **Table 4**).

There are several areas throughout the IRL which continue to have high estimated ChlA which correspond with shallow locations that likely have Submerged Aquatic Vegetation (SAV) or emergent vegetation. These locations will be evaluated and determined if they can be filtered out for the high estimated ChlA not being caused by algae.

For this week's imagery, the shoreline of Merritt Island from IRLML02 to IRLIRCMTITUS01 to IRLI13 has an estimated ChlA from 40-80 µg/L on May 16th and 17th. Then by May 18th these areas had a range of 10-40 µg/L. This will be investigated further to determine the likely cause of the sudden change in estimated ChlA in these areas, whether it is SAV related or HAB.

Table 3. Sentinel 3B estimated Chlorophyll A (ChIA) statistics in Micrograms/Lter (ug/L) for May 16, 2022, over the St. John River Water Management District (SJRWMD) Indian River Lagoon (IRL) Continuous Monitoring Stations.

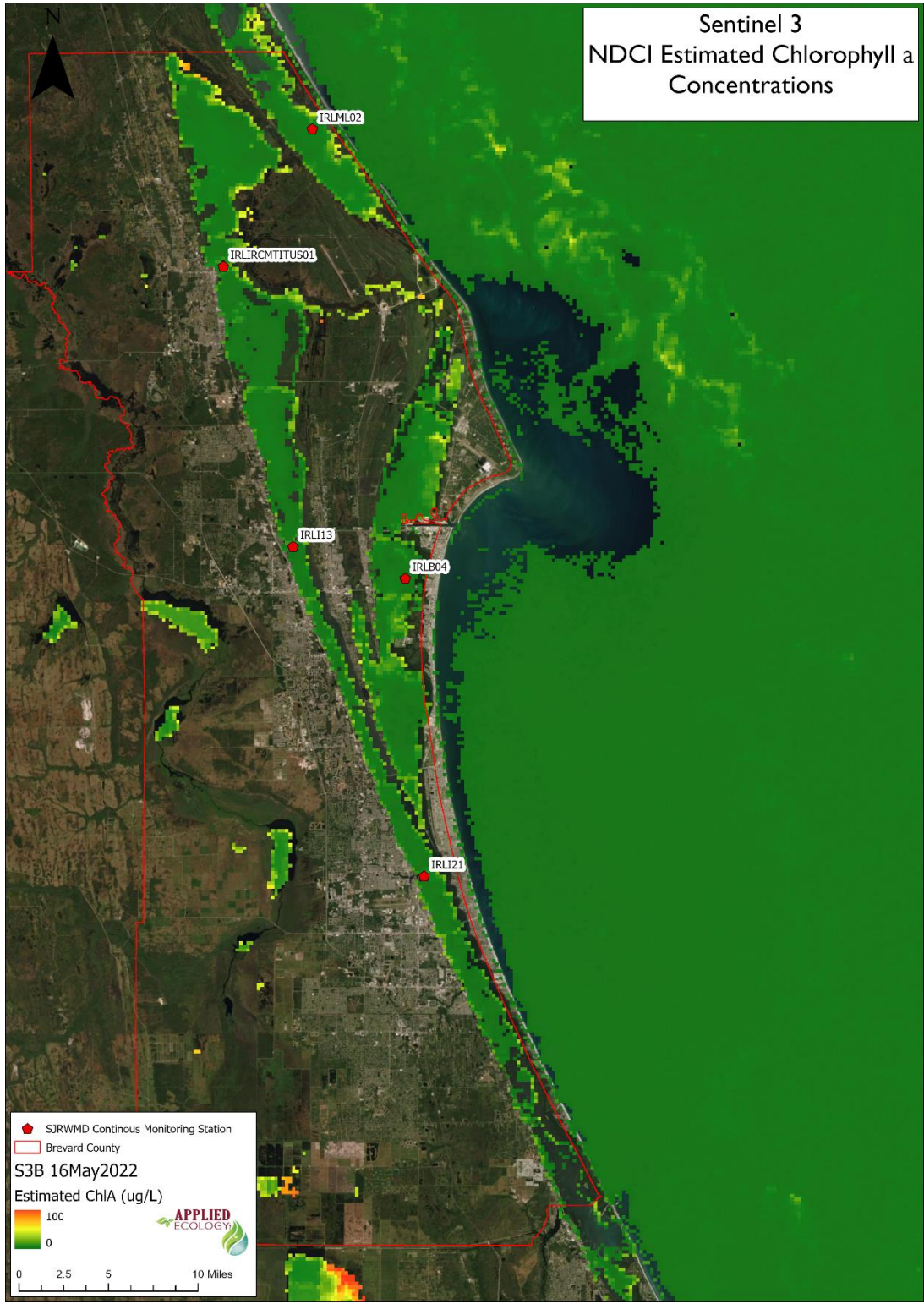
Station	Min ChIA	Max ChIA	Mean ChIA
IRLB04	2.9	5.1	4.1
IRLI13	1.2	24.4	11.5
IRLML02	8.2	10.8	9.2
IRLTITUS	15.1	32.9	24.5
IRLI21	2.8	6.7	4.9

Table 4. Sentinel 3A estimated Chlorophyll A (ChIA) statistics in Micrograms/Liter (µg/L) for May 18, 2022, over the St. John River Water Management District (SJRWMD) Indian River Lagoon (IRL) Continuous Monitoring stations.

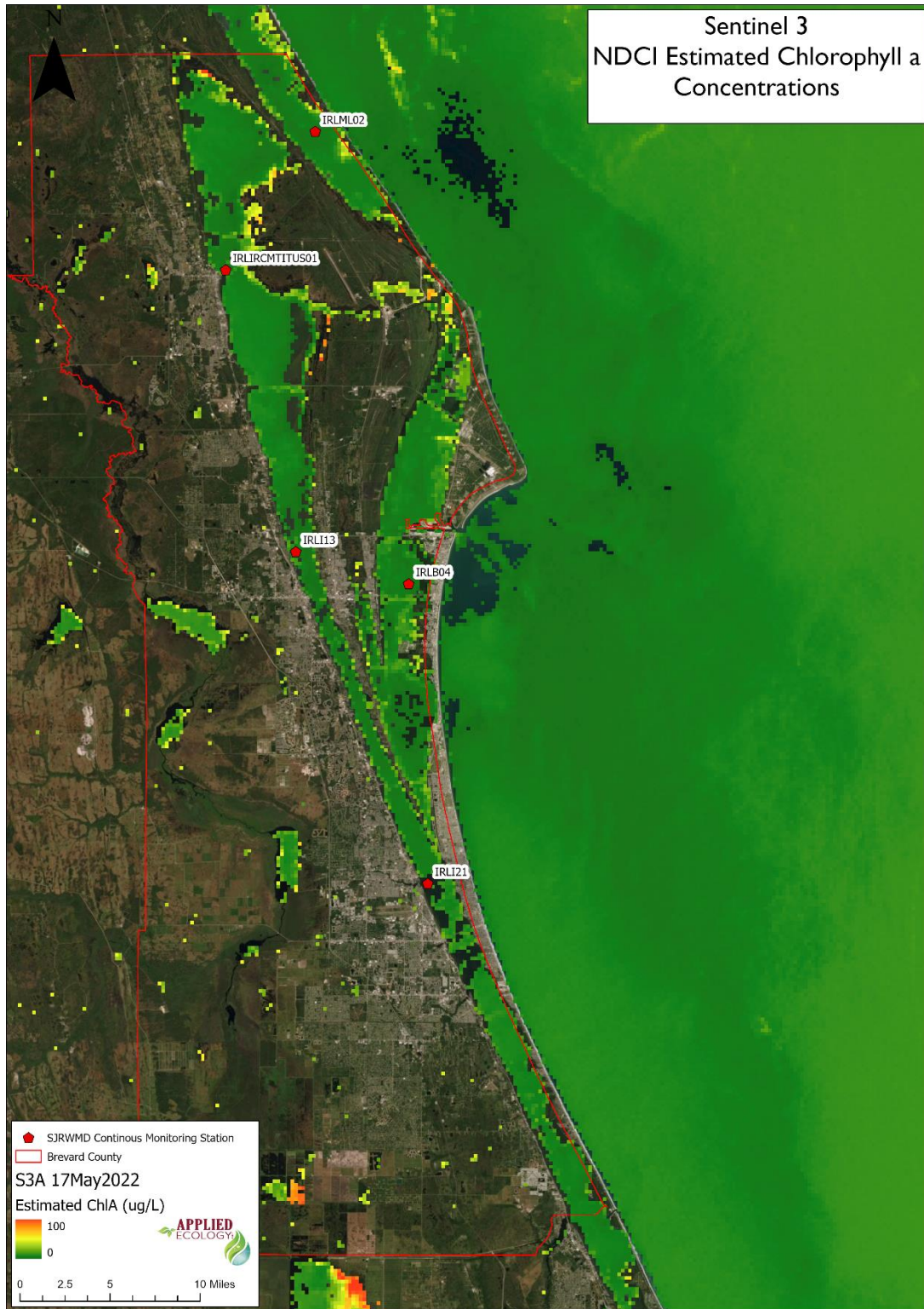
Station	Min ChIA	Max ChIA	Mean ChIA
IRLB04	6.0	9.1	7.5
IRLI13	6.3	16.1	8.1
IRLML02	8.5	9.3	9.0
IRLTITUS	12.9	24.2	18.6
IRLI21	7.6	28.7	14.1

Processed Imagery

16 May 2022- Sentinel 3B



17 May 2022- Sentinel 3A



18 May 2022- Sentinel 3A

