

Brevard County Parks & Recreation

2025 Facilities and Recreation Guide



2025

Cover Photo - Riverwalk: A Family Park

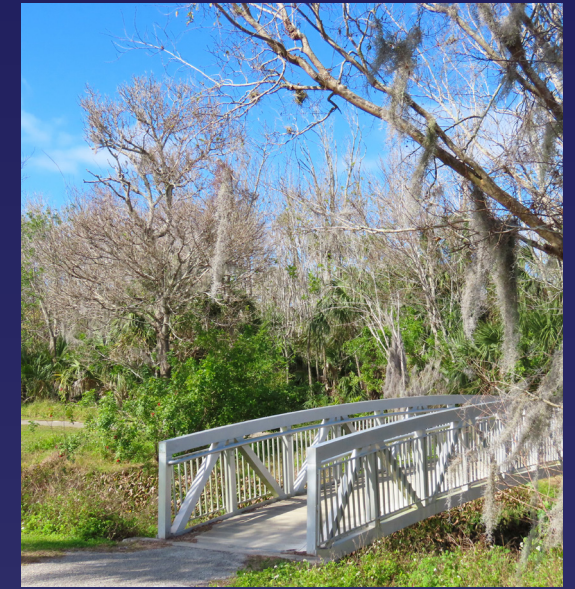
2025 FACILITIES AND RECREATION GUIDE



Fox Lake Sanctuary



Doc Ehrhart Sanctuary



Chain of Lakes

TABLE OF CONTENTS

| | |
|-----|--|
| 3. | About Brevard Parks and Recreation |
| | Mission Statement |
| | Core Values |
| 5. | Our Parks and Facilities |
| | North Area Parks |
| | Central Area Parks |
| | South Area Parks |
| | Environmentally Endangered Lands Sanctuaries |
| 9. | Centers |
| 12. | Campgrounds |
| | Long Point Campground |
| | Manatee Hammock Campground |
| | Wickham Park Campground |
| 14. | Athletics |
| | Outdoor Courts |
| | Indoor Courts |
| | Ball Fields |
| | Multi-Use Fields |
| 21. | Fitness |
| 22. | Biking, Hiking, and Walking Trails |
| 26. | Water Recreation |
| 29. | Beach Parks |
| 32. | Dog Parks |
| 34. | Pastimes |
| 38. | Playgrounds |
| 40. | Connect With Us! |
| | Website |
| | Social Media |
| | Brevard Parks and Recreation Calendars |

About Brevard County Parks & Recreation



MISSION STATEMENT

The mission statement of the Brevard County Parks and Recreation Department is to enhance the quality of life by providing many types and levels of service that reflect the interest and values of citizens and visitors.

01 A SENSE OF COMMUNITY

Brevard County Parks and Recreation is a local government agency in East Central Florida. It serves our communities and the nearly 640,000 residents of Brevard County through its passive and active recreation opportunities. Brevard Parks and Recreation strives to create an inclusive environment where all citizens have the opportunity to participate in activities together, contribute to their community, and form lasting bonds.

02 ACHIEVEMENT

Of the many parks and facilities available throughout the county, those that the Department manages include 106 parks, 3 campgrounds, 3 nature centers, 3 education centers, 15 community centers, 1 cultural center, 1 veterans center, 87 beach accesses, 10 school athletic sites, and 21 Environmentally Endangered Land sanctuaries and conservation areas. The Parks and Recreation Department encourages professional growth within the department while striving to meet the rotating goals of the public and organization as a whole.

03 RESPECT FOR NATURE

Extending 72 miles along Florida's Atlantic coast and inland up to 20 miles to the St. Johns River, Brevard County is represented by a wide variety of natural resources, vegetation, and wildlife species. The Indian River Lagoon is America's most diverse estuary system with more than 4,300 kinds of plants and animals. Brevard County's park system preserves our natural ecosystems through education and innovation, and dedicated staff take care of the land entrusted to us by taxpayers.

04 GOOD HEALTH

Brevard Parks and Recreation aims to promote a healthy lifestyle for citizens through both active and passive recreational activities, along with providing countless ways to connect with nature. Recreational opportunities range from nature preserves to state-of-the-art athletic facilities and active community centers. For those who love the outdoors, Brevard County Parks and Recreation provides venues for community and regional activities including camping, horse trails, fishing and boating, with a variety of picnic pavilions and playgrounds available at many of our parks.

To find out more about the parks listed in this guide such as contact information, location, rental information and a full list of amenities, please visit our [park directory](#). When you access the page, you will have the opportunity to use the filters to sort by city, area, activity, etc.

Our Parks & Facilities

The North Area has a rich history and serves a broad spectrum of interests through a variety of parks and recreation services in Scottsmoor, Mims, Titusville, Port St. John, and Cocoa. (321) 264-5105, NorthAreaParks@BrevardFL.gov

- Bernice G. Jackson Park
- Blanton Park
- Blue Hole Park
- Chain of Lakes Park
- Cuyler Park
- East Central Regional Rail Trail
- Fay Lake Wilderness Park
- Fay Park
- Fox Lake Park
- Friendship Park
- Gibson Complex and Field
- Harry T. & Harriette V. Moore Memorial Park
- Hatbill Park
- Holder Park
- Isaac Campbell Sr. Park
- Kennedy Point Park
- Manatee Hammock Campground
- Marina Park
- Mims Launch Ramp
- Nicol Park
- North Brevard Walking Trail
- Parrish Park – Scottsmoor
- Parrish Park – Titusville
- Port St. John Boat Ramp
- Port St. John Community Center
- Rotary Riverfront Park
- Sand Point Park
- Sandrift Community Center
- Scottsmoor Landing
- Sherwood Park
- Singleton Tennis Courts
- Six Mile Creek
- Space Coast Communities Sports Complex
- Space View Park
- Stuart Park
- Titusville Veterans Memorial Fishing Pier
- Tom Statham Park
- Vern Jansen Park
- W.W. James Park
- William J. Manzo Memorial Park
- Wuesthoff Park



Don “Mo” Stradley Park



Juan Ponce de Leon Park

CENTRAL AREA
PARKS OPERATIONS

The Central Area is the home to numerous recreational opportunities at its parks, boat ramps, aquatic centers, and beach access sites in Cocoa, Cape Canaveral, Cocoa Beach, Rockledge, and Merritt Island.
(321) 633-1874, CentralAreaParks@BrevardFL.gov

- | | |
|--------------------------------------|--|
| • Audubon Elementary School | • Margaret and Danny Strickland Park |
| • Cherie Down Park | • McKnight Family Sports Complex |
| • Cocoa West Recreation Complex | • McLarty Park |
| • Dick Blake Park | • MILA Elementary School |
| • Don “Mo” Stradley Memorial Park | • Mitchell Ellington Park |
| • Dr. Joe Lee Smith Park | • Osteen Park |
| • F. Burton Smith Park | • Pineview Park |
| • Harbor Point Park | • Provost Park |
| • Intracoastal Waterway Park | • Riverwalk: A Family Park |
| • James G. Bourbeau Memorial Park | • Robert P. Murkshe Memorial Park |
| • Jefferson Middle School | • Ron Smith Park at Tropical Elementary School |
| • Junny Rios Martinez Park | • Rotary Park Merritt Island |
| • Kelly Park East | • Silver Pines Park |
| • Kelly Park West | • Taylor Park Rockledge |
| • Kings Park | • Travis Park |
| • Kiwanis Island Park | • Valencia Dock |
| • Larry L. Schultz Park | • Veterans Memorial Park |
| • Leroy Wright Recreation Area | • Watts Park |
| • Lori Wilson Park (North and South) | • Woody Simpson Park |
| • Manatee Cove Park | |

The South Area offers a wide variety of recreational activities and state of the art sports complexes in Viera, West Melbourne, Melbourne Beach, Melbourne, Satellite Beach, Indialantic, Indian Harbour Beach, Grant-Valkaria, and Micco.
(321) 255-4400, SouthAreaParks@BrevardFL.gov

- | | |
|---------------------------------|--|
| • Bonsteel Park | • Micco Park |
| • Brevard Linear Park | • Nancy Higgs Park |
| • Canova Beach Park | • Police Foundation Park |
| • Christenson’s Landing | • POW/ MIA Park |
| • Eau Gallie Causeway Boat Ramp | • Rotary Park at Suntree |
| • Erna Nixon Park | • Seagull Park |
| • First Street Boat Ramp | • South Mainland Community Center |
| • Fisherman’s Landing | • South Patrick Community Park |
| • Flutie Athletic Complex | • South Patrick Residents Association Park |
| • Gemini Elementary School | • Spessard Holland North Beach Park |
| • Hoover Middle School | • Spessard Holland South Beach Park |
| • Howard E. Futch Memorial Park | • Suntree Elementary Athletic Complex |
| • Irene H. Canova Park | • Val M. Steele Park |
| • John Jorgensens Landing | • Viera Regional Park |
| • Juan Ponce de Leon Landing | • Wickham Park and Campground |
| • Kiwanis Park at Geiger Point | |
| • Lake Washington Park | |
| • Long Point Campground | |
| • Max K. Rodes Park | |

SOUTH AREA
PARKS OPERATIONS



Pine Island Conservation Area

The mission of the Environmentally Endangered Lands Program (EEL) is to protect and preserve biological diversity through responsible stewardship of Brevard County's natural resources. To find out more about the program, please visit the [EEL webpage](#). (321) 255-4466, EEL-Info@BrevardParks.com

- Coconut Point Sanctuary
- Crane Creek Sanctuary
- Diceranda Scrub Sanctuary
- Doc Ehrhart Sanctuary
- Enchanted Forest Sanctuary
- Fox Lake Sanctuary
- Grant Flatwoods Sanctuary
- Helen and Allen Cruikshank Sanctuary
- Indian Mound Station Sanctuary
- Jordan Scrub Sanctuary
- Malabar Scrub Sanctuary
- Maritime Hammock Sanctuary
- Micco Scrub Sanctuary
- North Buck Lake Scrub Sanctuary
- Pine Island Conservation Area
- Sams House at Pine Island
- Scottsmoor Flatwoods Sanctuary East
- Scottsmoor Flatwoods Sanctuary West
- South Lake Conservation Area
- Thousand Islands Conservation Area
- Ulumay Wildlife Sanctuary



Coconut Point Sanctuary



Fox Lake Sanctuary

Centers

Brevard County Parks and Recreation operates 15 community centers, 3 nature centers, 3 education centers, 1 cultural center, and 1 veterans center. Programming includes fitness, dance, athletic, educational, aquatics, cultural, safety, nature, youth, senior, technology, and after school programs. To find out more information regarding current programming, please contact the center near you, or feel free to visit our centers [webpage](#).

COMMUNITY CENTERS

- Cocoa West Community Center, Cocoa. (321) 633-1987
- Cuyler Community Center, Mims. (321) 264-5045
- Dr. Joe Lee Smith Community Center, Cocoa. (321) 633-1872
- Isaac Campbell Community Center, Titusville. (321) 264-5040
- Kiwanis Island Community Center, Merritt Island. (321) 455-1380
- Max K. Rodes Community Center, West Melbourne. (321) 952-3215
- McLarty Community Center, Rockledge. (321) 633-1870
- Nancy Higgs Community Center, Melbourne Beach. (321) 952-3210
- Port St. John Community Center, Port St. John. (321) 633-1904
- Sandrift Community Center, Titusville. (321) 264-5037
- South Mainland Community Center, Micco. (772) 663-8748
- Travis Community Center, Cocoa. (321) 633-1871
- Viera Regional Community Center, Viera. (321) 433-4891
- Walter Butler Community Center, Cocoa. (321) 433-4488
- Woody Simpson Community Center, Merritt Island. (321) 455-1379



Viera Regional Park

CULTURAL CENTER

- Harry T. and Harriette V. Moore Memorial Park, Mims. (321) 264-6595



Harry T. and Harriette V. Moore
Museum and Park

NATURE CENTERS

- Erna Nixon Park Nature Center, West Melbourne. (321) 952-4525
- Riverwalk: A Family Park Nature Center, Rockledge. (321) 433-4490
- Rotary Park Nature Center, Merritt Island. (321) 455-1385



Rotary Park Nature Center

VETERANS CENTER

- Veterans Memorial Park, Merritt Island. (321) 453-1776



Veterans Memorial Center

EDUCATION CENTERS

Our education centers are maintained and operated by the Environmentally Endangered Lands Program. For more information, please visit our [education centers webpage](#).

- Barrier Island Center at Doc Ehrhart Sanctuary, Melbourne Beach. (321) 723-3556
- Enchanted Forest Sanctuary Education Center, Titusville. (321) 264-5185
- Sams House at Pine Island, Merritt Island. (321) 449-4720



Sams House Education Center

Campgrounds

Brevard County Parks and Recreation owns and maintains 3 campgrounds, each with their own unique location and attributes.



LONGPOINT CAMPGROUND



This 84.5-acre conservation area and urban district river park on an island in the Indian River Lagoon is near the Sebastian Inlet marine ecosystems and the Atlantic Ocean. It features campsites along the shoreline for convenient shoreline fishing and wildlife viewing.

Amenities: Playground, bicycle roadway, volleyball courts, horseshoe pits, 1-lane boat ramp, showers, pavilions, fishing bridge and fishing dock.

Contact Information:

Address: 700 Long Point Road,
Melbourne Beach, FL 32951

Phone: (321) 952-4532

[Long Point Campground
Website](#)

[Long Point Park Rules and
Regulations](#)



MANATEE HAMMOCK CAMPGROUND



On the shore of the Indian River Lagoon, this 26.45-acre campground is a shaded and quiet hammock of pines, palms and foliage providing habitat to squirrels and birds. The shoreline offers a 198' fishing pier, 2 benches, and a perfect view of Kennedy Space Center rocket launches.

Amenities: Showers, laundry facilities, swimming pool, picnic pavilion, shore-line fishing, fishing pier, shuffleboard courts, and pickleball court.

Contact Information:

Address: 7275 S.
Highway 1, Titusville, FL 32780

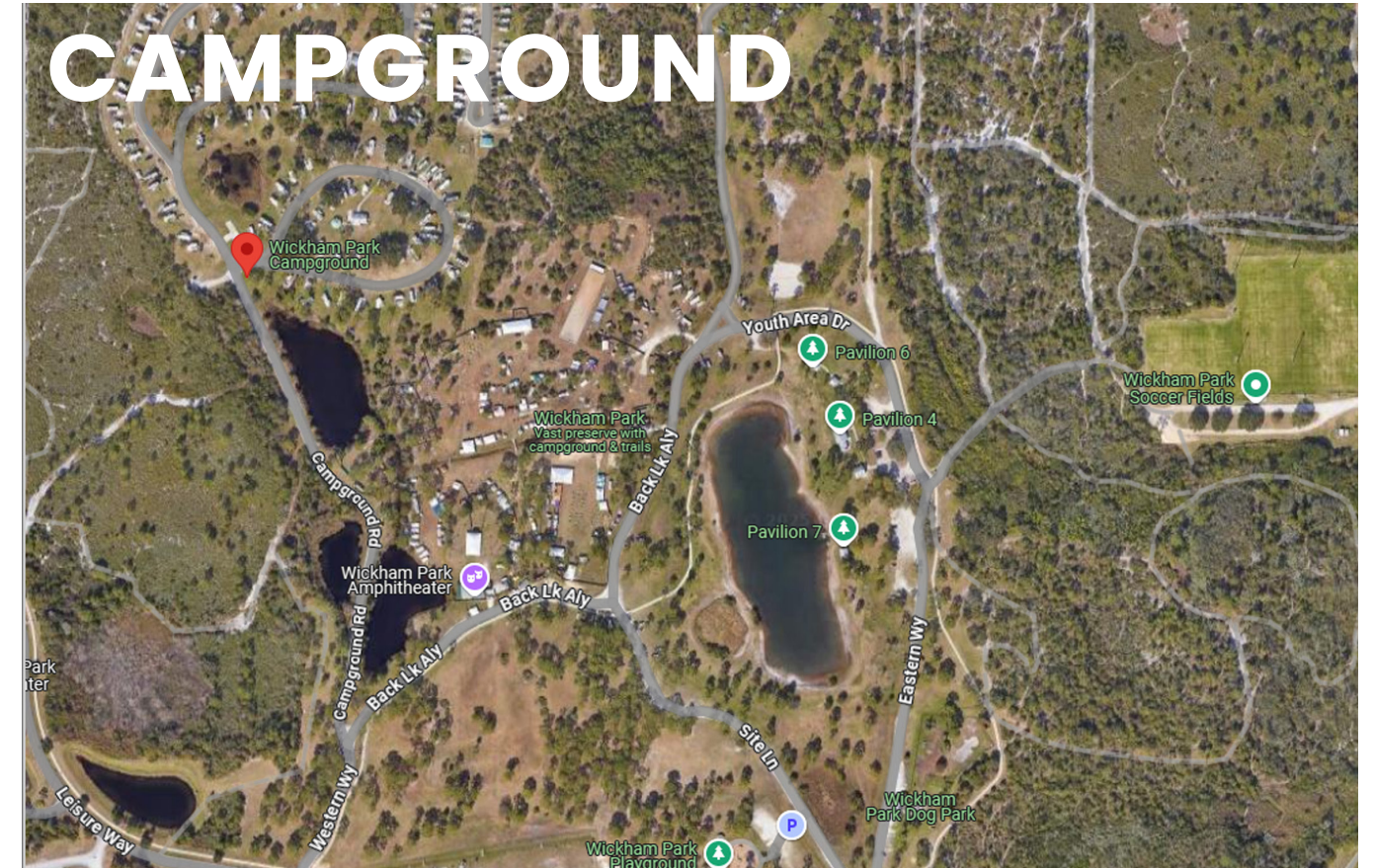
Phone: (321) 264-5083

[Manatee Hammock
Campground Website](#)

[Manatee Hammock Rules and
Regulations](#)



WICKHAM PARK CAMPGROUND



As part of the Great Florida Birding Trail and nestled in the heart of Melbourne, Wickham Park is a 391-acre recreational oasis for locals and visitors alike. With a wide variety of active and passive recreational activities, our park is the perfect destination. Community events, special activities and equestrian activities are regularly hosted at this expansive park.

Amenities: Pavilions and picnic areas, playground, paved pedway, designated fishing ponds, archery range, disc golf course, dog park, horseshoe pits, sand volleyball courts, shower and laundry facilities for campers, and plenty of hiking, biking, and equestrian trails.

Contact Information:

Address: 2500 Parkway Drive,
Melbourne, FL 32935

Phone: (321) 255-4307

[Wickham Park Campground
Website](#)

[Wickham Park Rules and
Regulations](#)



Athletic facilities vary per park. For more information on the facilities at each of the parks listed below, please visit our [park directory webpage](#). Once you access the park directory, you may sort the parks by area or city to find a park near you.



OUTDOOR COURTS



BASKETBALL COURTS

- Blanton Park
- Cocoa West Recreation Complex
- Cuyler Park
- Dr. Joe Lee Smith Park
- Fay Park
- Holder Park
- Hoover Middle School Athletic Complex
- Isaac Campbell Sr. Park
- Junny Rios Martinez Park
- Kelly Park - West
- Max K. Rodes Park
- McLarty Park
- Micco Park
- Parrish Park - Scottsmoor
- Pineview Park
- Port St. John Community Center
- Provost Park
- Ron Smith Park at Tropical Elementary School
- Sandrift Community Center
- Silver Pines Park
- Space Coast Communities Sports Complex
- Stuart Park
- Travis Park
- Viera Regional Park
- Watts Park
- Woody Simpson Park

OUTDOOR COURTS

RACQUETBALL COURTS

- Fay Park
- Kiwanis Island Park
- McKnight Family Sports Complex
- Singleton Tennis Courts



SHUFFLEBOARD COURTS

- Cocoa West Recreation Complex
- Watts Park

FUTSAL COURTS

- Max K. Rodes Park



Max K. Rodes Park



Kiwanis Island Park

TENNIS COURTS

- Cocoa West Recreation Complex
- Fay Park
- Flutie Athletic Complex
- Isaac Campbell Sr. Park
- Junny Rios Martinez Park
- Kelly Park - West
- Kiwanis Island Park
- McKnight Family Sports Complex
- McLarty Park
- Micco Park



Kelly Park - West

- Mitchell Ellington Park
- Provost Park
- Singleton Tennis Courts
- Viera Regional Park
- Watts Park

PICKLEBALL COURTS

- Cocoa West Recreation Complex
- Cuyler Park
- Flutie Athletic Complex
- Isaac Campbell Sr. Park
- Junny Rios Martinez Park
- Kelly Park - West
- Kiwanis Island Park
- McLarty Park
- Micco Park
- Mitchell Ellington Park
- Nancy Higgs Park



Nancy Higgs Park

- Provost Park
- Singleton Tennis Courts
- Viera Regional Park
- Woody Simpson Park

VOLLEYBALL COURTS



Howard E. Futch Park

- F. Burton Smith Regional Park
- Fox Lake Park
- Howard E. Futch Memorial Park
- Kelly Park - East
- Long Point Park
- Travis Park
- Wickham Park

INDOOR COURTS

GYMNASIUMS



Nancy Higgs Community Center

- Cocoa West Community Center
- Center Cuyler Community Center
- Dr. Joe Lee Smith Community Center
- Gibson Complex Community Center
- Kiwanis Island Community Center
- Max K. Rodes Community Center
- Nancy Higgs Community Center
- South Mainland Community Center
- Travis Community Center
- Viera Regional Community Center
- Walter Butler Community Center
- Woody Simpson Community Center

PICKLEBALL COURTS



- Cocoa West Community Center
- Cuyler Community Center
- Dr. Joe Lee Smith Community Center
- Gibson Complex Community Center
- Kiwanis Island Community Center
- Max K. Rodes Community Center
- Nancy Higgs Community Center
- South Mainland Community Center
- Travis Community Center
- Viera Regional Community Center
- Woody Simpson Community Center

For detailed information on the following ball fields, please visit our website: www.BrevardParks.com

BASEBALL FIELDS

- Audubon Elementary
- Don "Mo" Stradley Memorial Park
- Flutie Athletic Complex
- Holder Park
- Max K. Rodes Park
- McLarty Park
- MILA Elementary School
- Mitchell Ellington Park
- Ron Smith Park at Tropical Elementary School
- Space Coast Communities Sports Complex



Mitchell Ellington Park

- Suntree Elementary Athletic Complex
- Viera Regional Park
- W.W. James Park

SOFTBALL FIELDS



Parrish Park Scottsmoor

- Chain of Lakes Park
- Cocoa West Recreation Complex
- Cuyler Park
- Don "Mo" Stradley Memorial Park
- Fay Park
- Isaac Campbell Sr. Park
- Kiwanis Island Park
- Max K. Rodes Park
- McKnight Family Sports Complex
- MILA Elementary School
- Mitchell Ellington Park
- Parrish Park - Scottsmoor
- Silver Pines Park
- Stuart Park
- Suntree Elementary Athletic Complex
- Viera Regional Park
- Woody Simpson Park
- W.W. James Park

Multi-use fields can be used for soccer, football, lacrosse, and other purposes. For detailed information on the multi-use fields at each of the following park locations, please visit our website:

www.BrevardParks.com.

MULTI-USE FIELDS

BASEBALL FIELDS

- Audubon Elementary
- Chain of Lakes
- Cocoa West Recreation Complex
- Cuyler Park
- Dick Blake Park
- Don "Mo" Stradley Memorial Park
- Flutie Athletic Complex
- Gemini Elementary School
- Gibson Complex and Field
- Hoover Middle School Athletic Complex
- Jefferson Middle School
- Kelly Park - West
- Kings Park
- Max K. Rodes Park
- McKnight Family Sports Complex
- Mitchell Ellington Park
- Nancy Higgs Park
- Provost Park
- Rotary Park Merritt Island
- Sand Point Park
- South Patrick Community Park
- Space Coast Communities Sports Complex
- Stuart Park
- Viera Regional Park
- Wickham Park



INDOOR FITNESS CENTERS

• Cuyler Park

• Nancy Higgs Park



FITNESS EXERCISE STATIONS

- Blanton Park
- McKnight Family Sports Complex
- Sand Point Park
- Taylor Park Rockledge
- Veterans Memorial Park
- Viera Regional Park
- Wickham Park
- Wuesthoff Park



Fitness

Biking, Hiking, & Walking Trails

The boardwalks, paved trails, and natural trails vary per park. For more information on the facilities at each of the parks listed below, please visit our [park directory webpage](#). Once you access the park directory, you may sort the parks by area or city to find a park near you.

TRAILS WHERE BIKING IS PERMITTED

The list below includes natural and paved biking trails. Biking is permitted on designated trails only. Some types of electric bikes and other electric vehicles may be prohibited on certain trails. Please observe the posted rules at each park and nature sanctuary location. To learn more about each park's facilities, please visit www.BrevardParks.com.

- Brevard Linear Park
- Chain of Lakes Park
- Dick Blake Park
- East Central Regional Rail Trail
- Fay Lake Wilderness Park
- Fox Lake Park
- Fox Lake Sanctuary
- Grant Flatwoods Sanctuary
- Harry T. and Harriette V. Moore Memorial Park
- Intracoastal Waterway Park
- Jordan Scrub Sanctuary
- Kiwanis Island Park
- Kiwanis Park at Geiger Point
- Long Point Park
- Malabar Scrub Sanctuary
- Max K. Rodes Park
- Micco Scrub Sanctuary
- Mitchell Ellington Park
- Nancy Higgs Park
- Pine Island Conservation Area
- Rotary Park Merritt Island
- Sand Point Park
- Scottsmoor Flatwoods Sanctuary East
- Scottsmoor Flatwoods Sanctuary West
- Ulumay Wildlife Sanctuary
- Veterans Memorial Park
- Viera Regional Park
- Wickham Park
- Wuesthoff Park

Fox Lake Sanctuary



TRAILS WHERE EQUESTRIAN ACTIVITIES IS PERMITTED

- East Central Regional Rail Trail
- Fox Lake Sanctuary
- Grant Flatwoods Sanctuary
- Jordan Scrub Sanctuary
- Malabar Scrub Sanctuary
- Micco Scrub Sanctuary
- North Buck Lake Scrub Sanctuary
- Pine Island Conservation Area
- Scottsmoor Flatwoods Sanctuary East
- Wickham Park



Wickham Park

NATURAL HIKING TRAILS

- Bonsteel Park
- Chain of Lakes
- Dicerandra Scrub Sanctuary
- Dick Blake Park
- Doc Ehrhart Sanctuary
- Enchanted Forest Sanctuary
- Fox Lake Sanctuary
- Grant Flatwoods Sanctuary
- Helen and Allan Cruickshank Sanctuary
- Indian Mound Station Sanctuary
- Jordan Scrub Sanctuary
- Long Point Park
- Malabar Scrub Sanctuary
- Maritime Hammock Sanctuary
- Max K. Rodes Park
- Micco Scrub Sanctuary
- Nancy Higgs Park
- North Brevard Walking Trail
- North Buck Lake Scrub Sanctuary
- Sams House at Pine Island
- Scottsmoor Flatwoods Sanctuary East
- Scottsmoor Flatwoods Sanctuary West
- South Lake Conservation Area
- Thousand Islands Conservation Area
- Travis Park
- Ulumay Wildlife Sanctuary
- Wickham Park
- Wuesthoff Park



Coconut Point Sanctuary



Erna Nixon Park

BOARDWALKS & PAVED WALKING PATHS

- Bernice G. Jackson Park
- Brevard Linear Park
- Chain of Lakes
- Dick Blake Park
- Doc Ehrhart Sanctuary
- East Central Regional Rail Trail
- Enchanted Forest Sanctuary
- Erna Nixon Park
- F. Burton Smith Regional Park
- Fay Lake Wilderness Park
- Fox Lake Park
- Harry T. and Harriette V. Moore Memorial Park
- Intracoastal Waterway Park
- Jefferson Middle School
- Kelly Park - West
- Kings Park
- Kiwanis Park at Geiger Point
- Larry L. Schultz Park
- Lori Wilson Park
- Malabar Scrub Sanctuary
- Maritime Hammock Sanctuary
- Max K. Rodes Park
- Micco Park
- Mitchell Ellington Park
- Nancy Higgs Park
- Parrish Park - Titusville
- Pine Island Conservation Area
- Riverwalk: A Family Park
- Rotary Park Merritt Island
- Sams House at Pine Island
- Sand Point Park
- Scottsmoor Flatwoods Sanctuary West
- South Patrick Community Park
- Space View Park - U.S. Spacewalk of Fame
- Taylor Park Rockledge
- Titusville Veterans Memorial
- Fishing Pier
- Travis Park
- Vern Jansen Park
- Veterans Memorial Park
- Viera Regional Park
- Wickham Park
- William J. Manzo Memorial Park
- Wuesthoff Park



Marina Park

Boat ramps and canoe/kayak launches vary per park. For more information on the facilities at each of the parks listed below, please visit our [park directory webpage](#). Once you access the park directory, you may sort the parks by area or city to find a park near you.

BOAT RAMPS

- | | |
|-----------------------------------|--------------------------------|
| • Christenson's Landing | • Leroy Wright Recreation Area |
| • Eau Gallie Causeway Boat Ramp | • Long Point Park |
| • First Street Boat Ramp | • Marina Park |
| • Fox Lake Park | • Mims Launch Ramp |
| • Hatbill Park | • Parrish Park - Titusville |
| • James G. Bourbeau Memorial Park | • Port St. John Boat Ramp |
| • John Jorgensens Landing | • POW / MIA Park |
| • Kelly Park - East | • Sand Point Park |
| • Kennedy Point Park | • Scottsmoor Landing |
| • Kiwanis Island Park | • Six Mile Creek |
| • Lake Washington Park | |

NON-MOTORIZED LAUNCH AREAS

Mims Launch Ramp



Fox Lake Park



Veterans Memorial Park



- Crane Creek Sanctuary(kayak/ canoe)
- Fay Lake Wilderness Park
- F. Burton Smith Regional Park (kayak/canoe)
- Fisherman's Landing (kayak/ canoe)
- Fox Lake Park (kayak/canoe)
- Fox Lake Sanctuary (kayak/canoe)
- Hatbill Park (kayak/canoe)
- Kelly Park – East
- Kings Park (kayak/canoe)
- Kiwanis Island Park (kayak/canoe)
- Lake Washington Park
- Long Point Park (kayak/canoe)
- Manatee Cove Park (kayak/canoe)
- Mims Launch Ramp (kayak/canoe)
- Pine Island Conservation Area (kayak/canoe)
- POW / MIA Park
- Six Mile Creek (kayak/canoe)
- Thousand Islands Conservation Area (kayak/canoe)
- Ulumay Wildlife Sanctuary (kayak/ canoe)
- Veterans Memorial Park (kayak/ canoe)

DESIGNATED AIR BOAT RAMPS

- James G. Bourbeau Memorial Park
- Lake Washington Park

Lake Washington Park



McLarty Park



AQUATIC CENTERS

- Dr. Joe Lee Smith Park
- McLarty Park
- Manatee Hammock (for registered campground guests only)

Beach Parks



Juan Ponce de Leon Landing

The following county-maintained parks have direct access to the beach.

- Bonsteel Park
- Canova Beach Park
- Cherie Down Park
- Howard E. Futch Memorial Park
- Juan Ponce de Leon Landing
- Lori Wilson Park
- Robert P. Murkshe Memorial Park
- Seagull Park
- South Patrick Residents Association Park
- Spessard Holland North Beach Park
- Spessard Holland South Beach Park
- Val M. Steele Park

BEACH PARKS WITH ACCESSIBLE CROSSOVERS

- Bonsteel Park
- Canova Beach Park
- Cherie Down Park
- Howard E. Futch Memorial Park
- Juan Ponce de León Landing
- Lori Wilson Park
- Spessard Holland North Beach Park
- Spessard Holland South Beach Park
- Val M. Steele Park

Howard E. Futch Memorial Park



BEACH CROSSOVERS

NOT IN PARKS



Cape Canaveral:

- Arthur Avenue (limited parking)
- Garfield Avenue (limited parking)
- Grant Avenue (limited parking)
- Hayes Avenue (limited parking)
- McKinley Avenue (limited parking)
- Wilson Avenue (limited parking)

Cocoa Beach:

- 13th Street (limited parking)
- 24th Street (no parking)
- 26th Street (no parking)
- 27th Street (no parking)
- 28th Street (no parking)
- 29th Street (no parking)
- 30th Street (no parking)
- 32nd Street (no parking)
- 33rd Street (no parking)
- 35th Street (no parking)
- Crescent Beach Drive (limited parking)
- Fern Street (limited parking)
- Oleander Street (no parking)
- Olive Street (no parking)
- Summer Street (limited parking)
- Sunny Lane (limited parking)
- Taft Avenue (limited parking)

Indialantic:

- Barringer Condo North (no parking)
- Barringer Condo South (no parking)
- Coconut Drive (no parking)
- Coral Palm (no parking)
- Coral Way East (no parking)
- Cunningham Parcel (no parking)
- Del Flora (no parking)
- Flug Avenue (no parking)
- Grosse Point (no parking)
- Holiday Inn South (no parking)
- Niemira Avenue (no parking)
- Ocean Oaks Drive (no parking)
- Pine Tree Drive (no parking)
- Radisson South (limited parking)
- Sunrise Walk (no parking)
- Surf Walk (no parking)
- Terrace Shores (no parking)



Indian Harbour Beach:

- Wallace Avenue (limited parking)

South Beaches:

- Atlantic Drive, Melbourne Shores, (limited parking)
- Ballard Cove, Melbourne Beach, (no parking)
- River Drive, Melbourne Shores, (no parking)
- River Oaks Drive, Floridana Beach, (limited parking)
- Tracking Station, Melbourne Beach, (limited parking)

DOG BEACH

Dogs are welcome on the beach but must be on a leash and must wear tags showing their current license and vaccinations. There is no cost to use the dog beach, however, owners must pick up after their pets. Waste bags and proper receptacles are available.

- Canova Beach Park



Dog park facilities vary per park. For more information on the facilities at each of the parks listed below, please visit our [park directory webpage](#).

DOG PARK RULES



- Canova Beach Park
- Fay Lake Wilderness Park
- Lori Wilson Park
- Marina Park
- Nancy Higgs Park
- Wickham Park



Fay Lake Wilderness Park



Wickham Park



Nancy Higgs Park

- No park personnel are on duty in the dog park.
- Users of this facility do so at their own risk. Brevard County is not liable for any injury or damage caused by any dog or person in this park. Owners agree to assume the full responsibility of any injuries, damages, or loss connected with or associated with their use of the park. Please be reminded that failure to comply with park rules or maintain the facility in a clean or orderly fashion could result in the closing of the facility.
- Daily hours of operation are from 7:00 AM to dusk.
- Climbing over or on the fence is prohibited.
- The off-leash dog park is for dogs, their handlers, and those accompanying them. No other animals or use is allowed.
- All dogs must have their current rabies vaccine, animal license tag and wear a collar with visible identification at all times. Choke collars are prohibited.
- A handler must be physically capable of controlling their dog. All handlers are required to remain inside the gates and be in view or voice contact with their dog at all times. Limit two dogs per handler per visit.
- Dogs in heat and puppies under the age of four months are prohibited. It is recommended that all dogs using the park be spayed or neutered.
- Handlers must carry a leash at all times. The leash must be of sufficient strength to control the dog and not to exceed six foot in length. Dogs must be leashed prior to entering and upon leaving the gated areas.
- Handlers must clean up after their pets (Brevard County Animal Enforcement Code Section 14-59.)
- Food, alcohol, strollers and bicycles are not allowed inside the park.
- Children under 18 years old must be accompanied and supervised by a parent or guardian at all times. It is recommended that small children not be brought into the off-leash area. Children are not permitted to run with or chase after dogs.
- Aggressive dogs are prohibited from the park. Dogs exhibiting rough, aggressive, or dangerous behavior must be removed immediately.
- Brevard County Staff have the authority to close the site for maintenance, weather related problems, and special events.
- An infraction of any of these can result in temporary or permanent loss of park privileges.

Pastimes

For more information on the facilities at each of the parks listed in this guide, please visit our [park directory webpage](#). Once you access the park directory, you may sort the parks by area or city to find a park near you.

FISHING

Fishing opportunities, including surf fishing, lake fishing, and shoreline fishing, vary per park.

- Bonsteel Park
- Canova Beach Park
- Chain of Lakes
- Cherie Down Park
- Christenson’s Landing
- Doc Ehrhart Sanctuary
- Eau Gallie Causeway Boat Ramp
- F. Burton Smith Regional Park
- Fay Lake Wilderness Park
- First Street Boat Ramp
- Fisherman’s Landing
- Fox Lake Park
- Hatbill Park
- Howard E. Futch Memorial Park at Paradise Beach
- Intracoastal Waterway Park
- Irene H. Canova Park
- James G. Bourbeau Memorial Park
- John Jorgensens Landing
- Juan Ponce de León Landing
- Kelly Park - East
- Kelly Park - West
- Kennedy Point Park
- Kings Park
- Kiwanis Island Park
- Kiwanis Park at Geiger Point
- Lake Washington Park
- Larry L. Schultz Park



- Leroy Wright Recreation Area
- Long Point Park
- Lori Wilson Park
- Manatee Cove Park
- Margaret and Danny Strickland Park
- Marina Park
- Max K. Rodes Park
- Mims Launch Ramp
- Nicol Park
- Osteen Park
- Parrish Park - Titusville
- Pine Island Conservation Area
- Port St. John Boat Ramp

- POW / MIA Park
- Robert P. Murkshe Memorial Park
- Rotary Park at Suntree
- Rotary Riverfront Park
- Sams House at Pine Island
- Sand Point Park
- Scottsmoor Landing
- Seagull Park
- Six Mile Creek
- South Patrick Residents Association Park
- Space View Park - U.S. Spacewalk of Fame
- Spessard Holland North Beach Park
- Spessard Holland South Beach Park
- Thousand Islands Conservation Area
- Titusville Veterans Memorial Fishing Pier
- Tom Statham Park
- Val M. Steele Park
- Valencia Dock
- Veterans Memorial Park
- Watts Park
- Wickham Park
- William J. Manzo Memorial Park



Titusville Veterans Memorial Fishing Pier

GEOCACHING

Geocaching is permitted in all Brevard Parks. In our sanctuaries, please stay on the trail for personal safety and protection of the natural environment, and do not feed, disturb, or harm wildlife.



DISC GOLF

- F. Burton Smith Park
- Nancy Higgs Park
- Wickham Park



F. Burton Smith Park

HORSESHOES

- Don “Mo” Stradley Memorial Park
- Fox Lake Park
- Long Point Park
- Wickham Park



Don “Mo” Stradley Memorial Park

SKATE PARKS

- Dick Blake Park
- Marina Park



Marina Park

BIRDWATCHING

While all of Brevard parks offer the opportunity to spot birds and other wildlife, the following parks and sanctuaries are recognized as part of the Great Florida Birding Trail.

- Doc Ehrhart Sanctuary
- North Buck Lake Conservation Area
- Chain of Lakes Park
- Val M. Steele Park
- Enchanted Forest Sanctuary
- Erna Nixon Park
- Fox Lake Park
- Hatbill Park
- James G. Bourbeau Memorial Park
- Kelly Park East
- Kennedy Point Park
- Lake Washington Park
- Malabar Scrub Sanctuary
- Maritime Hammock Sanctuary
- Micco Scrub Sanctuary
- Parrish Park – Titusville
- Pine Island Conservation Area
- Rotary Park at Suntree
- Rotary Park Merritt Island
- Scottsmoor Landing
- Wickham Park



Playgrounds

Playground styles vary per park. For more information on the facilities at each of the parks listed below, please visit our [park directory webpage](#). Once you access the park directory, you may sort the parks by area or city to find a park near you.



- Bernice G. Jackson Park
- Blanton Park
- Chain of Lakes
- Cocoa West Recreation Complex
- Cuyler Park
- Dick Blake Park
- Dr. Joe Lee Smith Park
- F. Burton Smith Regional Park
- Fay Lake Wilderness Park
- Fay Park
- Flutie Athletic Complex
- Fox Lake Park
- Friendship Park
- Gemini Elementary School
- Holder Park
- Hoover Middle School Athletic Complex
- Howard E. Futch Memorial Park
- Isaac Campbell Sr. Park
- Junny Rios Martinez Park
- Kelly Park - East
- Kelly Park - West
- Kiwanis Island Park
- Lake Washington Park
- Larry L. Schultz Park
- Long Point Park
- Lori Wilson Park
- Manatee Cove Park
- Margaret and Danny Strickland Park (swing set only)
- Marina Park
- Max K. Rodes Park
- McKnight Family Sports Complex
- McLarty Park
- Micco Park
- Mitchell Ellington Park
- Nancy Higgs Park
- Nicol Park
- Osteen Park
- Parrish Park - Scottsmoor
- Pineview Park
- Police Foundation Park
- Port St. John Community Center
- Provost Park
- Rotary Park at Suntree
- Rotary Park Merritt Island
- Rotary Riverfront Park
- Sand Point Park
- Sandrift Community Center
- Silver Pines Park (swing set only)
- South Mainland Community Center
- South Patrick Community Park
- Space Coast Communities Sports Complex
- Stuart Park
- Taylor Park Rockledge
- Tom Statham Park
- Travis Park
- Veterans Memorial Park
- Viera Regional Park
- Watts Park
- Wickham Park
- William J. Manzo Memorial Park



PLAYGROUNDS WITH ACCESSIBLE ROUTES

- Fay Lake Wilderness Park
- Fox Lake Park
- Howard E. Futch Park
- Marina Park
- Nancy Higgs Park
- Sand Point Park
- Sandrift Community Center
- Space Coast Communities Sports Complex
- Stuart Park
- South Mainland Community Center
- Suntree Rotary Park
- Wickham Park



CONNECT WITH US

WEBSITE:

Brevard Parks and Recreation: www.BrevardParks.com

Environmentally Endangered Lands Program: BrevardFL.gov/EELProgram

SOCIAL MEDIA:

Facebook:

Brevard Parks and Recreation: [@BrevardParks](https://www.facebook.com/BrevardParks)

Environmentally Endangered Lands Program: [@eelbrevard](https://www.facebook.com/eelbrevard)

Instagram:

Brevard Parks and Recreation: [@brevardparks](https://www.instagram.com/brevardparks)

BREVARD PARKS AND RECREATION CALENDARS:

To find out more information on what's happening at Brevard parks, please visit our calendars below, which you can find on our website www.BrevardParks.com.

[Brevard Parks and Recreation General Calendar](#)

[Persons with Disabilities Calendar](#)

[Environmentally Endangered Lands Calendar](#)

