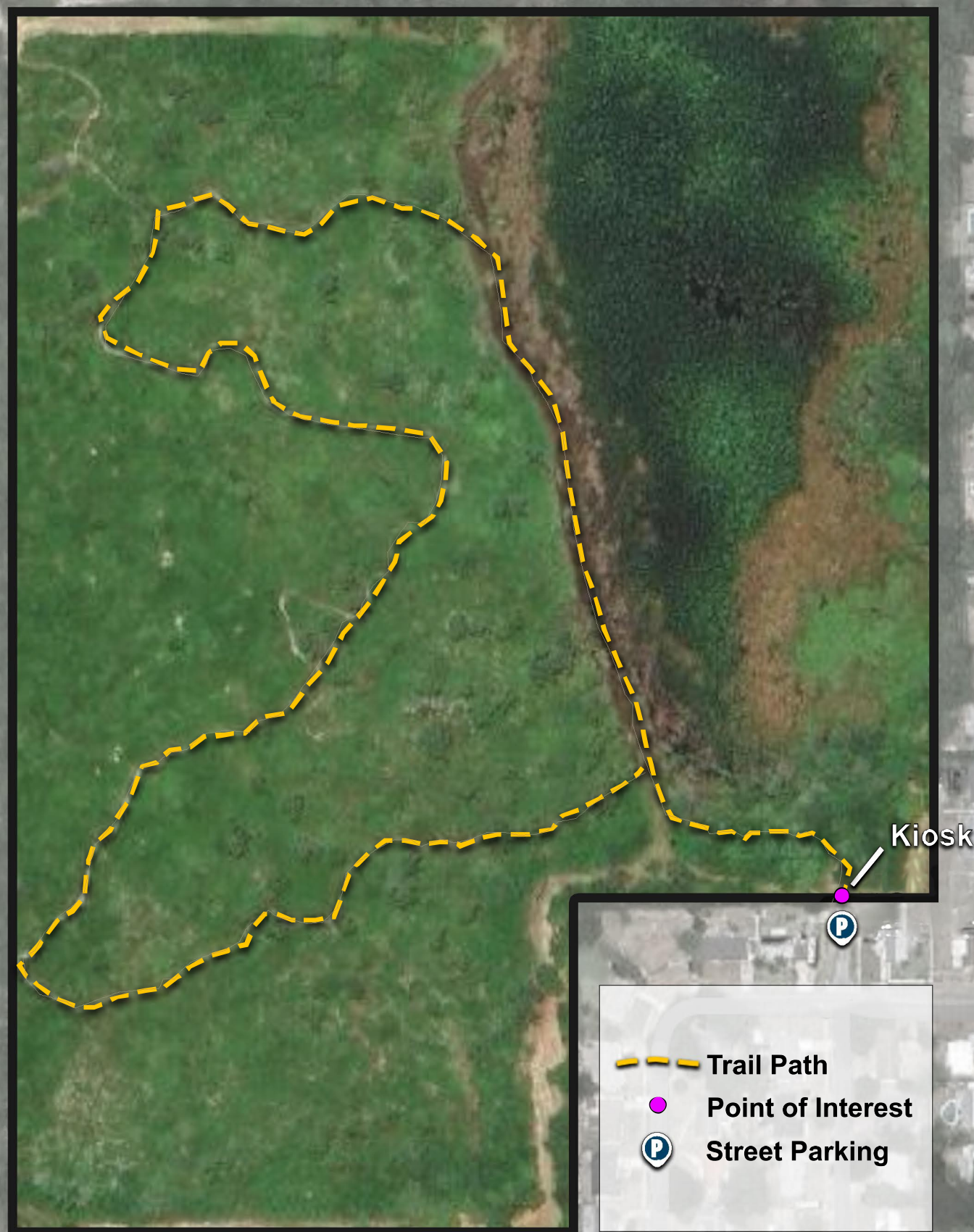


Dicerandra Scrub Sanctuary Trail Map



Dicerandra Scrub Sanctuary Trail Map

Description:

The 44-acre habitat of scrubby flatwoods, oak hammock, and a large depression marsh at Dicerandra Scrub Sanctuary is located on the Atlantic Coastal Ridge, a relict beach and dune system. Formation of the Atlantic Coastal Ridge is associated with Pamlico time (circa 140,000 – 120,000 years before present) when sea level was about 30 feet higher than it is now. Protected plant and wildlife species documented on site during recent or past studies include Florida scrub-jay, eastern indigo snake, gopher tortoise and *Dicerandra thiniicola*, a rare scrub mint known only to occur in the northern region of Brevard County. *Dicerandra thiniicola* (Titusville mint) is a small herbaceous shrub listed as state endangered and is endemic to only about a 31-mile range in Brevard County. This is one of the few locations where it can be found on conservation lands, making it a critically imperiled species.

Parking:

To enjoy the Dicerandra Scrub Sanctuary's mile long trail that loops through hammock, scrubby flatwoods, past a depression marsh, and back to the trailhead, please park at the end of Melissa Dr. in Titusville (approximately location: 4900 Melissa Dr., Titusville, FL 32780).

Trail Instructions:

The only official trailhead for Dicerandra Scrub Sanctuary can be found at the north dead end of Melissa Dr., Titusville. Through the walk-through gate you will find an educational kiosk with a map and information about the trail and site.

The trailhead starts off in oak hammock, and as you go west it opens to scrubby flatwoods. You must cross the firebreak to continue the trail. There are two benches found on this section spaced evenly apart. The trail will then loop back onto the firebreak on the north end of the property and will have you walk south along the edge of a depression marsh. It leads back to the oak hammock and then the trailhead.