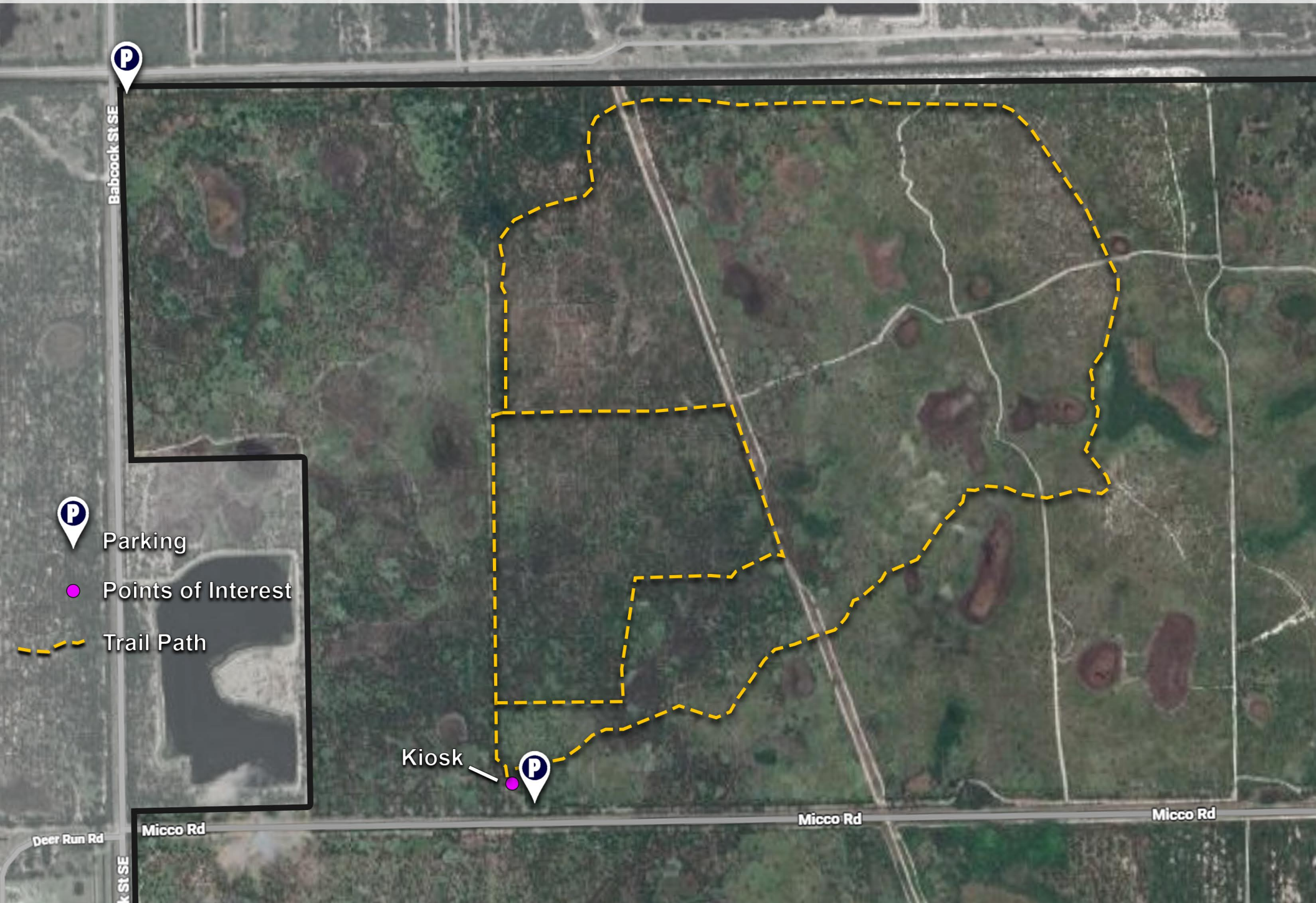


Micco Scrub Sanctuary Trail Map



Micco Scrub Sanctuary Trail Map

Description:

Micco Scrub Sanctuary is a 1,322-acre nature sanctuary managed by the Brevard County Environmentally Endangered Lands Program. The Sanctuary is located at 500 Micco Rd. Plam Bay, FL 32909.

The Micco Scrub Sanctuary is home to a variety of habitats including scrub, scrubby flatwoods, mesic flatwoods and wetlands.

The main trailhead is located near the parking area off Micco Rd. Visitors can enjoy hiking, mountain biking and equestrian trails.

Parking:

To enjoy the many trails of Micco Scrub Sanctuary, you can park at the main parking area and trailhead at 500 Micco Rd., Plam Bay, FL 32909. There is a kiosk at the trailhead that contains information on the sanctuary, map of the trail systems, and a brochure box. There is also another small parking area located off Babcock Road just south of the Sotile canal.

Trail Instructions:

From the main parking area, you will find the entrance to the trailhead next to the informational kiosk. From there you can take the trail north or east. The trail forms a large 3-mile loop through the sanctuary. If you take the trail north, after .12 miles, you will arrive at the entrance to a smaller 1-mile loop within the larger 3-mile loop. If you take the 1-mile loop trail, it will dead end back at the main larger trail. Taking the trail south will bring you back to the main trailhead and parking lot. These trails take you through mesic flatwoods, scrubby flatwoods, scrub and depression marshes.