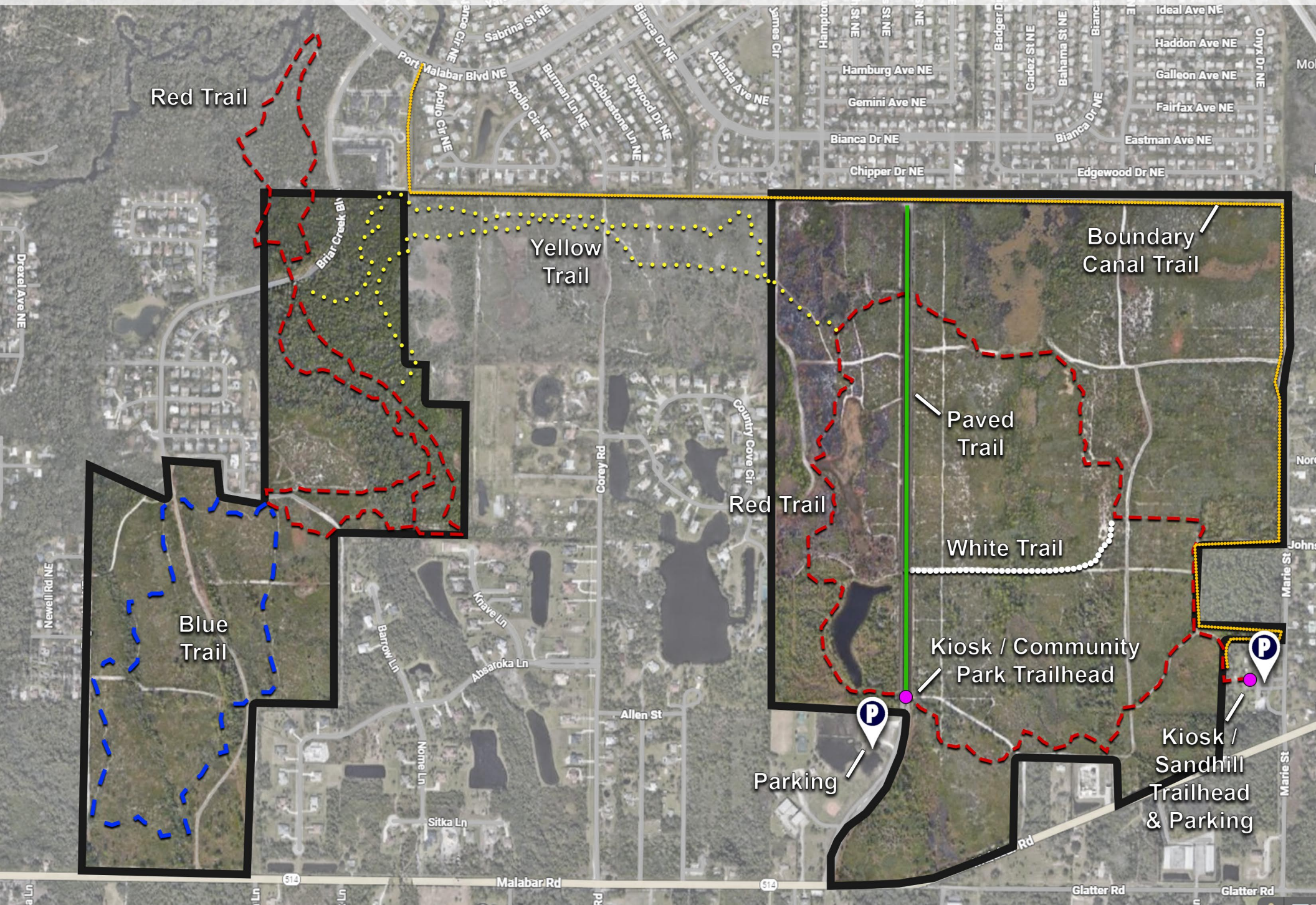


Malabar Scrub Sanctuary Trail Map



Malabar Scrub Sanctuary Trail Map

Description:

Malabar Scrub Sanctuary is a 577-acre nature sanctuary managed by the Brevard County Environmentally Endangered Lands Program. The Sanctuary is located off Malabar Road between I-95 and US-1.

Malabar Scrub Sanctuary is home to a variety of habitats including scrub, scrubby flatwoods, mesic flatwoods and wetlands.

The main trailhead is located near the parking area and restrooms for the Malabar Community Park. Visitors can enjoy hiking, mountain biking, equestrian trails and a scenic overview from the observation platform on the north end.

Parking:

To enjoy the many trails of Malabar Scrub Sanctuary, you can park at the Malabar Community Park located at 1501 Malabar Woods Blvd., Malabar, FL 32950 or to access the ADA trailhead you can park at the Town of Malabar Sandhill trailhead located at 1401 Marie Street, Malabar, FL 32950. There is a kiosk at the trailhead that contains information on the sanctuary, map of the trail systems, and a brochure box.

Trail Instructions:

The Malabar Sanctuary is split up into an east section and West section divided by the Town of Malabar's Cameron Preserve. There are two trailheads and places to park.

Malabar East Red Trail: The Red Trail loop begins at the Malabar Community Park Trailhead in Malabar East, you will find a kiosk with maps and information about the trail. Once you enter the sanctuary, you can follow the Red Trail to the east or the west which forms a large loop with other trails branching off from it. If you take the trail east, you will come upon the Sandhill Trailhead before turning north. You will then pass the entrance to the Boundary Canal Trail which continues along the east and north boundaries of the sanctuary. If you continue on the Red Trail, you will pass the White Trail entrance, which ends at the main paved trail cutting through Malabar East. Keeping on the Red Trail you can either loop around back down south to the main trailhead, or you can take the Yellow Trail west to the Malabar West portion of the sanctuary.

Yellow Trail: Once on the Yellow Trail, you will cut across the Cameron Preserve to Malabar West until you dead end at the Malabar west Red Trail.

Malabar West Red Trail: Once you reach the Malabar West Red Trail from the Yellow Trail, you can take the trail north which is a loop into the Turkey Creek Sanctuary. Or you can take the Red Trail south which will lead to an elevated boardwalk through a forested wetland and over a winding creek and eventually connects with the Blue Trail, which loops back to the Red Trail through Scrub habitat. You will then continue on the red trail until you are back at the Yellow Trail, which leads you to the main trailhead in Malabar East.

Malabar East Paved Trail: From the Malabar Community Park Trailhead, you could choose to go north, which dead ends at the Boundary Canal Trail. Once you reach the Boundary Canal Trail at the north end of the sanctuary, you can take it west to loop back to the mail trailhead or take it East and exit the sanctuary boundaries. Also on the north end is an overlook where many times scrub jays and bald eagles can be viewed.