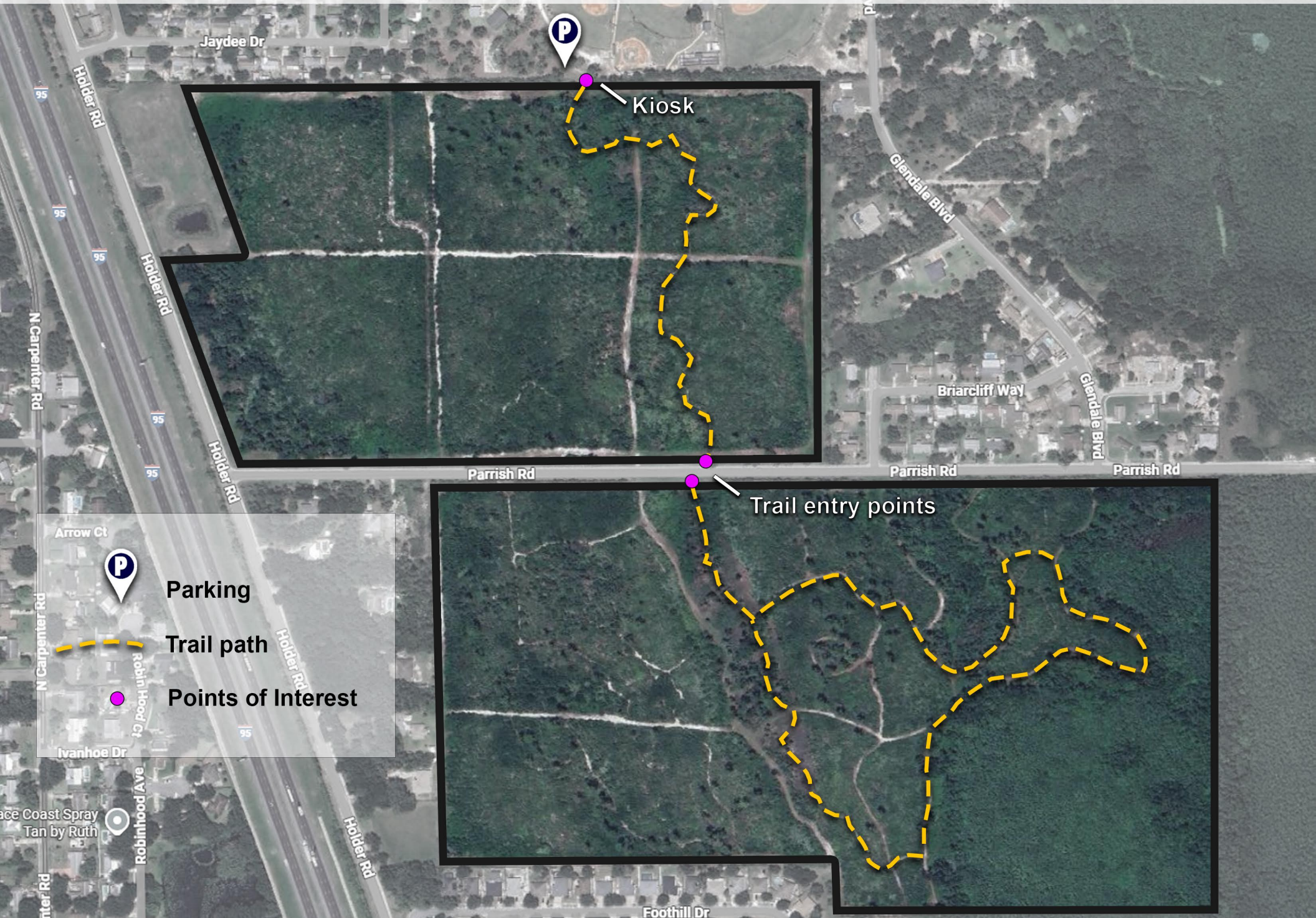


# Indian Mound Station Sanctuary Trail Map



# Indian Mound Station Sanctuary Trail Map

## Description:

Indian Mound Station Sanctuary is a 147-acre sanctuary that straddles the north and south sides of Parrish Road in Mims, just east of I-95. Habitats include scrub, pine flatwoods, depression and forested wetlands. The site also provides protection to a bald eagle nest, a Native American burial mound, and a portion of a tramway that connected the St. Johns River and the Indian River Lagoon. Common wildlife sightings include bald eagles, gopher tortoises and Florida Scrub Jays.

Access to the property is from Holder Park on the northern boundary. There is a kiosk at the trailhead that contains information on the sanctuary and a map of the trail system.

## Parking:

To enjoy the Indian Mound Station Sanctuary's 1.61-mile trail, please park in the designated parking area south of the ball fields at Holder Park, located at 2650 Glendale Blvd., Mims, FL 32754.

## Trail Instructions:

Indian Mound Station Sanctuary is made up of two units separated by the western end Parrish Rd., one unit to the south and one to the north. The units are located just east of I-95 and Holder Rd. The trailhead is located south of the ball fields in Holder Park. The trail takes you south through the northern portion of the sanctuary. Once you reach Parrish Rd., you can cross the street to the southern portion of the sanctuary and continue following the trail. The southern portion of the trail loops back into itself, where you can continue back north, past Parrish Road, and back to the beginning of the trail.