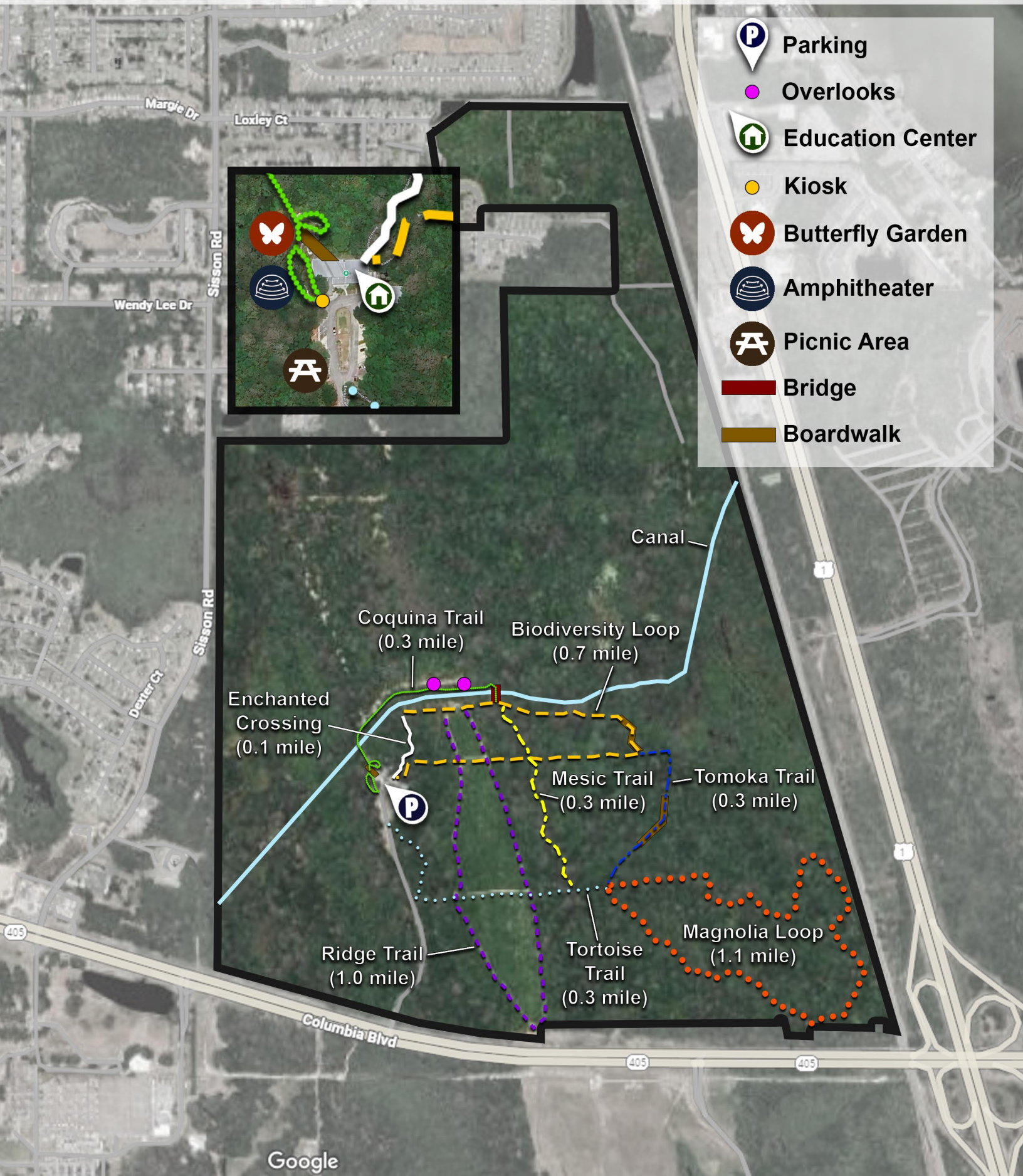


# Enchanted Forest Sanctuary Trail Map



# Enchanted Forest Sanctuary Trail Map

## Description:

A "Flagship" sanctuary, the Enchanted Forest Sanctuary is the first property that was purchased by the Brevard County Environmentally Endangered Lands (EEL) Program. This 470-acre forest is part of a sanctuary network that the EEL Program is working to establish in the county.

Located in the southern limits of the City of Titusville, the Enchanted Forest Sanctuary preserves a diversity of natural habitats. Several miles of hiking trails allow visitors to enjoy the natural beauty of the region. Wildlife observation, nature photography, and hiking are popular recreational activities. A wonderful wealth of plant life also abounds as both temperate (northern) and subtropical (southern) species grow in the Sanctuary together. The Management and Education Center interprets the Sanctuary's unique natural features for visitors of all ages and abilities.

There are five basic habitat types found at the Enchanted Forest Sanctuary: *Oak scrub*, *mesic and hydric hammock*, *wet prairie*, and *pine flatwoods*. Wildlife species found here include the Eastern indigo snake, Florida scrub lizard, gopher tortoise, white-tailed deer, and bobcat.

## Parking:

The main entrance to the Enchanted Forest Sanctuary is located north of 405, east of I-95 and west of US 1. Facilities at Enchanted Forest Sanctuary include a trail system, an Education Center, parking for 60+ vehicles and parking for two buses. To enjoy the many trails of the Enchanted Forest (which total approximately 4.5-miles when added together), please park in the parking lot of the Management and Education Center located at 444 Columbia Blvd., Titusville 32780.

## Trail Instructions:

An extensive network of trails exists within the Enchanted Forest Sanctuary. From the Management and Education Center, there are four different trail heads that you can start on. Going south will start you on the Tortoise Trail, going north will start you on the Coquina Trail, going north-northeast will start you on the Enchanted Crossing Trail, and going east will start you on the Biodiversity Loop.

Tortoise Trail: The 0.3-mile Tortoise Trail brings you past two entrances to the north-south running Ridge Trail loop which is 1-mile in length. If you choose not to take the Ridge Trail, the Tortoise Trail will end at the 1.1-mile Magnolia loop where there is an information kiosk. Instead of taking the Magnolia Loop, you can turn north and take the

0.3-mile Tomoka Trail which has a boardwalk area and ends at the Biodiversity Loop, leading you back to the Education Center.

Coquina Trail: The Coquina Trail is 0.3 miles and passes two overlooks on the canal. The trail ends after you go over a bridge and reach a fork in the trail. Here you can take the 0.7-mile Biodiversity Loop going east back to the Education Center or west to continue on the loop where you will pass over a boardwalk before continuing on the loop. Alternatively, you can go south from the Coquina trail end and take the Mesic Trail, which is 0.3 miles. The Mesic Trail dead ends at the 0.3-mile Tortoise Trail where there is an information kiosk, which you can take east back to the Education Center or west to the 1.1-mile Magnolia Loop.

Enchanted Crossing Trail: The Enchanted Crossing Trail is 0.1 mile paved trail and ends at an overlook which connects to the Biodiversity Loop. Since the Addison Canal is a key feature, an observation platform has been built where the coquina outcropping is exposed. The platform is accessible from the Enchanted Crossing paved trail to accommodate and comply with ADA requirements.

Biodiversity Loop: The Biodiversity Loop is a 0.7-mile loop trail. As you travel east along the loop from the Education Center, you will pass two entrances to the 1-mile looped Ridge Trail (both going north and south), the 0.3-mile Mesic Trail entrance (going north and south), the 0.3-mile Tomoka Trail (going south), over a boardwalk, and will turn back west. After the boardwalk you will pass a crossroads where you can take the Mesic trail south, the 0.3-mile Coquina Trail north, or continue the Biodiversity loop west. You will loop past the two trailheads for the Ridge Trail loop before ending at the canal overlook at the 0.1-mile Enchanted Crossing Trail.

## **Other Points of Interest:**

The Education and Management Center is located at the north end of the entrance road, which is located to the southwest of the sanctuary. There is an information kiosk located out front

The Picnic Area and Amphitheater are located directly west of the Management and Education Center.

A Butterfly Garden is located northwest of the management and Education Center.