

**BREVARD COUNTY, FLORIDA  
ANNUAL OPERATING AND CAPITAL BUDGET  
FOR FY 2019-2020**



## INTRODUCTION

### HOW TO READ AND USE THIS BUDGET DOCUMENT

The Adopted Budget for Brevard County for the Fiscal Year 2019-2020 includes the following major components:

#### **The Budget Message**

The Budget Message provides an overview of the Budget, highlights the County's response to the needs of the community and the direction provided by the Board of County Commissioners, and other factors affecting the development of the Budget.

#### **General Information**

This section provides general and historical information about the County and its budgets plus basic information about property. A description of the budget preparation philosophy and process, historical information, descriptions of the services provided, and a description of the budget structure and governmental (fund) accounting are included.

#### **Budget and Financial Policies**

The Budget and Financial Policies adopted by Brevard County, Board of County Commissioners are provided here.

#### **Financial Indicators and Major Revenues**

Brief historical summaries of key financial indicators based on the County's Comprehensive Annual Financial Reports are presented here. Additionally, brief descriptions and histories of the County's major sources of revenue are included.

#### **Budget Summaries**

The County's total budget is summarized by revenue sources, appropriations by category, and fund. Also included are Budgeted Employee Positions and charts depicting the summaries.

#### **Department, Office, and Agency Budgets**

Included in each segment is an organizational/functional chart of each department, office or agency. This is followed by a Departmental Summary, which provides an overview of the Department's mission and budget and a list of the programs provided by the agency. A summary of the Department's budget is followed by Program Profiles of the various programs which comprise the departmental operations. Included in the Program Profile is a summary of the budget for that program and a listing of the major services included in the program. Also included are performance measures, major service level impacts (if any), listings of proposed travel, capital outlay and budgeted capital improvement projects. The various departments, offices or agencies are presented in alphabetical order within several broad categories which include: *Board of County Commissioners* directed agencies; the operating agencies which comprise the *Charter Officers* of the County; the operating entities which comprise the County-funded portion of *Court Operations*; and the *Outside Agencies* which comprise the subordinate component units of the County government of Brevard County, Florida, as well as those private agencies which provide services which might otherwise be direct functions of the County.

## INTRODUCTION

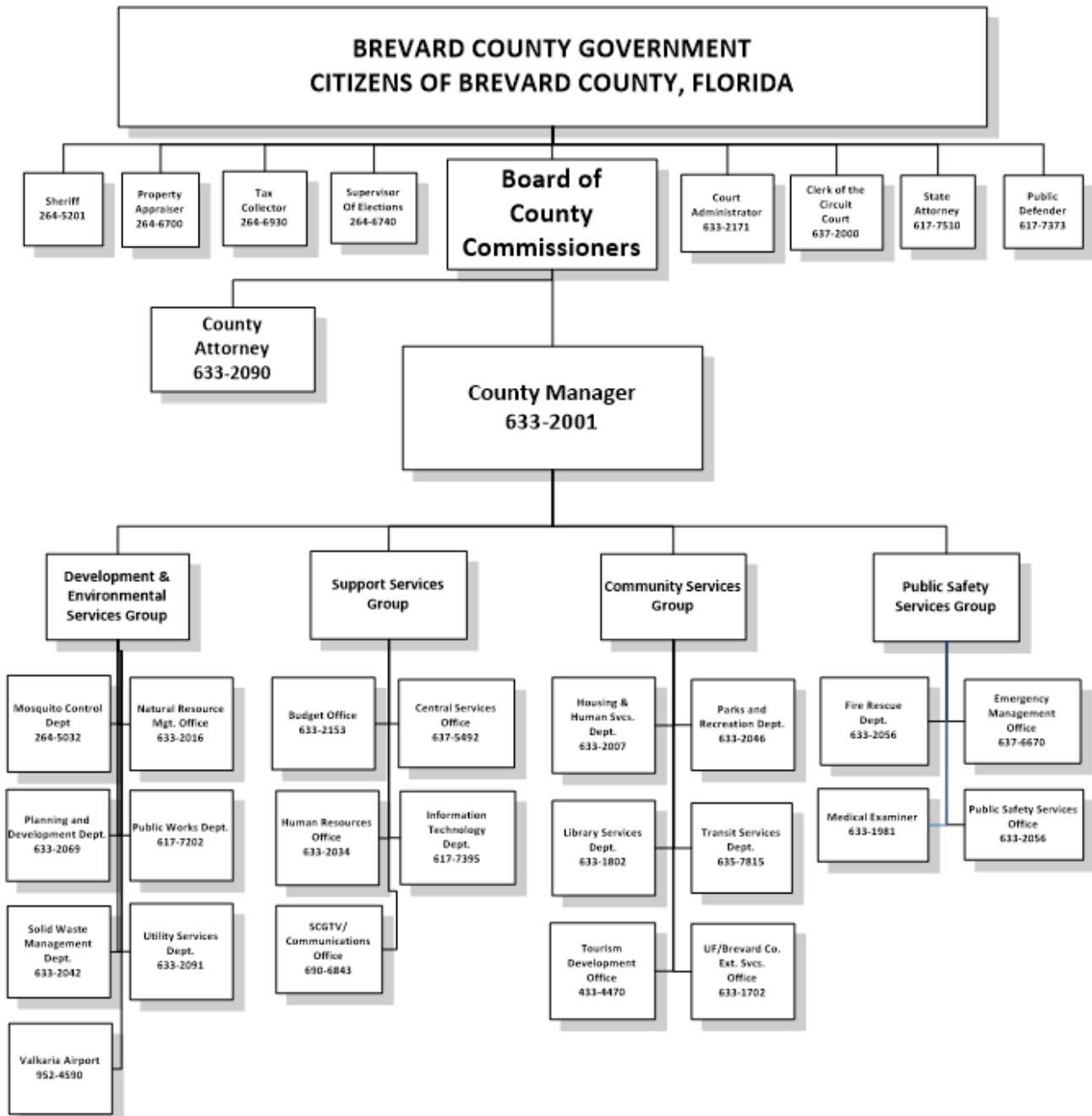
### **Capital Improvement Program**

The County's detailed CIP is provided here.

### **Appendices**

The appendix includes a Glossary of Terms and Florida Statute citations.

# INTRODUCTION



## INTRODUCTION

### BREVARD COUNTY GOVERNMENT OFFICIALS



## BOARD OF COUNTY COMMISSIONERS

Brian Lober, Chair .....	District 2
Rita Pritchett, Vice-Chair.....	District 1
Kristine Isnardi .....	District 5
John Tobia .....	District 3
Curt Smith .....	District 4

## CHARTER OFFICERS

Scott Ellis .....	Clerk of the Circuit Court
Dana Blickley .....	Property Appraiser
Wayne Ivey.....	Sheriff
Lori Scott .....	Supervisor of Elections
Lisa Cullen .....	Tax Collector

## STAFF

Frank Abbate .....	County Manager
Eden Bentley .....	County Attorney

## INTRODUCTION

### ACKNOWLEDGEMENTS

Special recognition should be given to the following for their efforts in the development and preparation of the FY 2019-2020 Budget for Brevard County, Florida:

**The Board of County Commissioners**, for their continuous involvement in and direction of the budget process.

**Frank Abbate, County Manager and County Budget Officer**, for his direction and support.

**Assistant County Manager John Denninghoff and Assistant County Manager Jim Liesenfelt, Assistant to the County Manager Kathy Wall**, for their early participation and efforts within their areas of control.

**Department Directors, Agency Managers, Charter Officers and their Staffs**, for their efforts in the development of their respective portions of this budget.

**The Clerk Finance Department**, for technical information and assistance.

The Current Budget Office Staff

**Jill Hayes**

**Chelsea Rollyson**

**Keith Neterer**

**Pamela Wallace**

**Jane Toliver**

**Budget Director**

**Senior Management and Budget Analyst**

**Management and Budget Analyst**

**Special Projects Coordinator**

**Administrative Assistant to the Department Director**

INTRODUCTION

**Appendix**

## INTRODUCTION

# County Manager's Organizational Chart Text Version

Updated 12-03-2019

### **County Manager**

Frank Abbate  
(321) 633-2001

### **Development & Environmental Services Group**

John Denninghoff, Assistant County Manager  
(321) 633-2002

### ***Mosquito Control***

Joseph Faella, Director  
(321) 264-5032

### ***Natural Resources Management***

Virginia Barker, Director  
(321) 633-2016

### ***Planning & Development***

Tad Calkins, Director  
(321) 633-2070

### ***Public Works***

Corrina Gumm, Interim Director  
(321) 617-7202

### ***Solid Waste Management***

Euripides Rodriguez, Director  
(321) 633-2042

### ***Utility Services***

Edward Fontanin, Director  
(321) 633-2091

### ***Valkaria Airport***

Steve Borowski, Manager  
(321) 952-4590

### **Support Services Group**

Frank Abbate, County Manager  
(321) 633-2001

### ***Budget Office***

Jill Hayes, Director  
(321) 633-2153



## INTRODUCTION

### ***Central Services***

Steven Darling, Director  
(321) 637-5492

### ***Communications / Space Coast Government Television***

Don Walker, Director  
(321) 690-6843

### ***Human Resources***

Jerry Visco, Director  
(321) 633-2034

### ***Information Technology***

Jeff Mcknight, Director  
(321) 617-7395

### ***Public Safety Group***

Matthew Wallace, Public Safety Director  
(321) 633-2056

### ***Fire Rescue***

Mark Schollmeyer, Fire Chief  
(321) 633-2056

### ***Emergency Management***

Kimberly Prosser, Director  
(321) 637-6670

### ***Medical Examiner***

Sajid Qaiser, Md  
(321) 633-1981

### ***Public Safety Office***

Matthew Wallace, Director  
(321) 637-5390

### ***Community Services Group***

Jim Liesenfelt, Assistant County Manager  
(321) 633-2003

### ***Housing & Human Services***

Ian Golden, Director  
(321) 633-2007

### ***Library Services***

Jeff Thompson, Director  
(321) 633-1801

## INTRODUCTION

### ***Parks & Recreation***

Mary Ellen Donner, Director  
(321) 633-2046

### ***Tourism Development***

Peter Cranis, Director  
(321) 433-4470

### ***Transit Services***

Scott Nelson, Director  
(321) 635-7815

### ***University of Florida / Extension Services***

Beth Shephard, Interim Director  
(321) 633-1702